

estate agents **auctioneers**

**hollis  
morgan**



Flat 24, Arley Court Arley Hill, Cotham, Bristol, BS6 5PH

£240,000

A bright and spacious one bedroom purpose built apartment in a modern development, situated just moments from the vibrant Cheltenham Road with its fantastic array of independent shops, cafes and restaurants.

- Purpose built development
- Gas Central Heating - new Worcester Bosch combi boiler
- Bright and spacious
- Excellent Location
- Chain free
- Ideal First Time purchase or Investment property
- Double glazing

### The Property

Located on the 2nd floor of this purpose-built development, is this well presented one bedroom apartment.

The property comprises a spacious double bedroom with large fitted wardrobe with mirrored sliding doors.

Across the hall, the fully tiled bathroom is fitted with a contemporary 3 piece suite with shower over the bath.

Continuing through the apartment, you enter a large open-plan kitchen and living space, flooded with natural light through the large window whilst benefiting from pleasant urban outlooks.

The kitchen is fully fitted with modern appliances and ample storage floor and wall cupboards.

Finally, the flat benefit from a deep storage room and externally, the property benefits from secure bike storage lockers.

### Location

Arley Hill is a popular and attractive location in Cotham and within a short walk of the University of Bristol, the city centre and Cheltenham Road and Gloucester Road with its vibrant independent shops, bars and restaurants and the city Centre close by with its array of business, educational, leisure, shopping and entertainment facilities, including the impressive Cabot Circus complex.

Local bus routes are located within a short walking distance whilst Redland train station is only 1/4 mile. The motorway network is also easily accessible.

### Other Information

Leasehold: 125 years - 107 years remaining

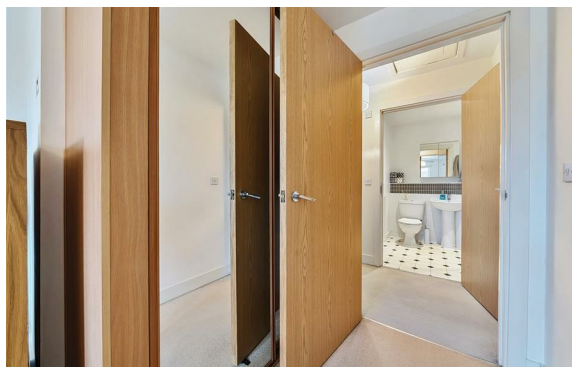
Management Fee: circa £94 PCM

Ground Rent - £300 Per Annum

Council Tax Band: B

### Please Note

Hollis Morgan endeavour to make our sales details clear, accurate and reliable in line with the Consumer Protection from Unfair Trading Regulations 2008 but they should not be relied on as statements or representations of fact and they do not constitute any part of an offer or contract. All Hollis Morgan references to planning, tenants, boundaries, potential development, tenure etc is to be superseded by the information provided in your solicitors enquiries. It should not be assumed that this property has all the necessary Planning, Building Regulation or other consents. Any services, appliances and heating system(s) listed may not been checked or tested and you should rely on your own investigations. The seller does not make any representation or give any warranty in relation to the property and we have no authority to do so on behalf of the seller. Please note that in some instances the photographs may have been taken using a wide angle lens.





hollis  
morgan

---